



COUNTY OF ALAMEDA

**Sample Ballot and
Voter Information Pamphlet**

**HAYWARD UNIFIED
SCHOOL DISTRICT**

SPECIAL VOTE BY MAIL ELECTION

**NO POLLING PLACES WILL BE
UTILIZED FOR THIS ELECTION**

TUESDAY, MAY 2, 2017

001

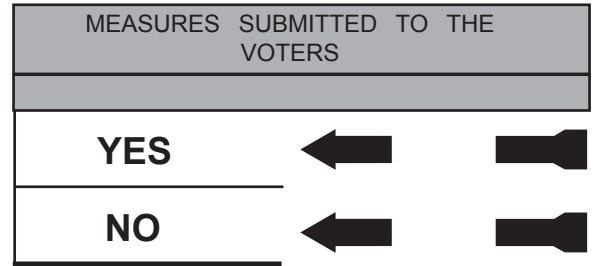
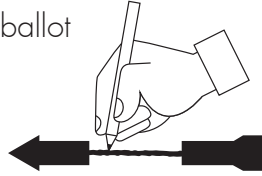




MAKE YOUR VOTE COUNT

STEPS TO ENSURE YOUR VOTE COUNTS

- Use black or blue ballpoint pen **only**
- To vote, **completely** connect the arrow pointing to your "YES" or "NO" choice
- Make sure you clearly mark your ballot



MAKE YOUR VOTE COUNT

Remember to sign the back of your return envelope.

RETURN YOUR BALLOT EARLY

APRIL						
S	M	T	W	T	F	S
23	24	25	26	27	28	29
30						

- Mail your ballot by April 27th to ensure it is received in time to be processed.



Ballots can be dropped off at any of the following locations:

- Alameda County Registrar of Voters Office
1225 Fallon St. Room G-1, Oakland, CA. 94612
Monday–Friday from 8:30 a.m.–5:00 p.m.
Election Day from 7:00 a.m.–8:00 p.m.
- 24-Hour Drop Boxes
Alameda County Administration Building
1221 Oak Street, Oakland, CA. 94612
Hayward City Hall
777 B Street, Hayward, CA. 94541

Our 24-hour drop boxes will be open until 8:00pm on Election Day.

ATTENTION

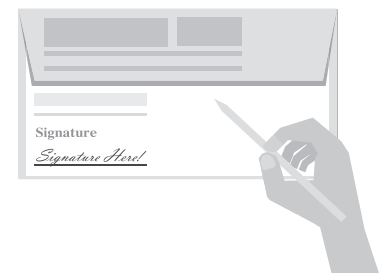
HAYWARD UNIFIED SCHOOL DISTRICT VOTERS

- This is a special Vote By Mail election; ballots will be automatically mailed to all registered voters who reside in the Hayward Unified School District.
- **NO** polling places will be utilized for this election.
- **NO** postage necessary to return the ballot.
- If you are unable to enter the Courthouse building because of age or physical disability, you will be allowed to vote either in your vehicle or near the Courthouse building. To make an appointment or arrangements, please contact our office at (510) 272-6933.
- Disability Rights California will operate an Election Day Hotline: 1-888-569-7955 from 7:00 a.m.– 8:00 p.m.

*IMPORTANT DATES

- **APRIL 3, 2017** - First day of early voting at the Registrar of Voters office
- **APRIL 3, 2017** - First day to mail Vote By Mail ballots to Voters
- **APRIL 17, 2017** - Last day to register to vote for this election
- Ballots must be in the Alameda County Registrar of Voters office or an official ballot drop box **no later than 8pm on MAY 2, 2017.**
- Mail your ballot by **APRIL 27th** to ensure it is received in time to be processed. Your ballot must be postmarked on or before Election Day and received by the Registrar of Voters office no later than **MAY 5th.**

MAY						
S	M	T	W	T	F	S
	1	2	3	4	5	6
7	8	9	10	11	12	13
14	15	16	17	18	19	20
21	22	23	24	25	26	27
28	29	30	31			



 Don't forget to sign the back of your Vote By Mail return envelope

*If date falls on a holiday, deadline will be on the following business day.

Sample Ballot

OFFICIAL BALLOT / BOLETA OFICIAL

HAYWARD UNIFIED SCHOOL DISTRICT, SPECIAL VOTE BY MAIL ELECTION
ELECCIÓN ESPECIAL DE VOTACIÓN POR CORREO, DISTRITO ESCOLAR UNIFICADO DE HAYWARD
ALAMEDA COUNTY / CONDADO DE ALAMEDA

MAY 2, 2017 / 2 DE MAYO DE 2017

INSTRUCTIONS TO VOTERS: USE BLACK OR BLUE BALLPOINT PEN ONLY.
To vote on any measure, complete the arrow after the word "Yes" or "No."



INSTRUCCIONES PARA LOS VOTANTES: USE UN BOLÍGRAFO CON TINTA NEGRA O AZUL SOLAMENTE.
Para votar por cualquier medida, complete la flecha después de la palabra "Sí" o "No."

MEASURES SUBMITTED TO THE VOTERS MEDIDAS SOMETIDAS A LOS VOTANTES

SCHOOL ESCUELA

A Quality Local Schools and Academic Excellence Measure of 2017. To protect critical education programs, with funds that cannot be taken by the State, including math, reading, writing, and hands-on science classes and labs; restore and maintain music and art programs; enhancing library services, technology and college preparation programs; and attracting and retaining qualified teachers; shall Hayward Unified School District renew its expiring voter approved education tax at \$88 per parcel annually, for 12 years, with senior exemptions, independent citizens' oversight and all money used for classrooms?

Medida de 2017 para Escuelas Locales de Calidad y Excelencia Académica. Para proteger programas fundamentales de educación, con fondos de los cuales no pueda apoderarse el Estado, incluyendo matemáticas, lectura, escritura, y laboratorios y clases prácticas de ciencias; restablecer y mantener programas de arte y música; mejorar servicios de biblioteca, tecnología y programas de preparación para colegio universitario; y atraer y conservar a maestros calificados; ¿deberá el Distrito Escolar Unificado de Hayward renovar por 12 años, al nivel de \$88 por parcela anualmente, su impuesto que está venciendo, aprobado por los votantes, sobre educación, quedando exentas las personas de la tercera edad, y contando con supervisión de carácter independiente por ciudadanos, y utilizándose todo el dinero para los salones de clase?

YES
SI

NO
NO



Sample Ballot

BT:1

CA01-1-0001-420200-1-S

HAYWARD UNIFIED SCHOOL DISTRICT MEASURE A

<p>A Quality Local Schools and Academic Excellence Measure of 2017. To protect critical education programs, with funds that cannot be taken by the State, including math, reading, writing, and hands-on science classes and labs; restore and maintain music and art programs; enhancing library services, technology and college preparation programs; and attracting and retaining qualified teachers; shall Hayward Unified School District renew its expiring voter approved education tax at \$88 per parcel annually, for 12 years, with senior exemptions, independent citizens' oversight and all money used for classrooms?</p>	<p>YES</p>
	<p>NO</p>

and art programs; and attracting and retaining teachers. The measure further provides that the monies collected shall be accounted for separately and expended only for those specified purposes. The measure provides for an independent citizens' oversight committee and revenue and expenditure reports.

If two-thirds of the qualified electors voting on this measure do not vote for approval, the measure will fail, and the District will not be authorized to levy the special tax upon Measure G's expiration.

This measure is placed on the ballot by the governing board of the District.

s/DONNA R. ZIEGLER
County Counsel

COUNTY COUNSEL'S IMPARTIAL ANALYSIS OF MEASURE A

ANALYSIS BY THE COUNTY COUNSEL OF A HAYWARD UNIFIED SCHOOL DISTRICT SPECIAL PARCEL TAX MEASURE

Measure A, a Hayward Unified School District ("District") special parcel tax measure, seeks voter approval to authorize the District to levy an annual special parcel tax on each parcel of taxable real property for a period of 12 years, beginning July 1, 2017. This measure would levy eighty-eight dollars (\$88.00) on each parcel of taxable real property within the District annually. The District's voters previously authorized Measure G, which is an annual special parcel tax assessment of fifty-eight dollars (\$58.00) on each parcel. Measure G will expire on June 30, 2017. If approved, this measure's parcel tax shall be levied upon the expiration of Measure G.

A school district has the authority to levy special taxes upon approval by two-thirds of the votes cast on the special tax proposal. (*See* Cal. Const. Art. XIII A, § 4; Art. XIII C, §2; Cal. Gov't Code §§ 50075-50077, 50079, & 53722.)

If two-thirds of the qualified electors voting on this measure vote for approval, the District will impose a special tax on all parcels of taxable real property annually for 12 years. The Alameda County Treasurer-Tax Collector will collect the tax at the same time and in the same manner as *ad valorem* property taxes. All property that the Alameda County Treasurer-Tax Collector has determined to be otherwise exempt from *ad valorem* property taxes in any year shall also be exempt from this measure's levy. Upon application to the District, the District may grant an exemption to certain individuals who own a beneficial interest in the parcel and occupy the parcel as his or her principal place of residence. These individuals include anyone who is 65 years of age or older (by July 1 of the relevant tax year).

If the measure passes, the funding revenue will be used for the specific purposes set forth in the full text of the measure printed in this sample ballot, including, among others: enhancing library services, technology and college preparation programs; restoring and maintaining music

The above statement is an impartial analysis of Measure A, which is printed in full in this sample ballot pamphlet. If you desire an additional copy of the measure, please call the Elections Official's office at (510) 272-6933, and a copy will be mailed to you at no cost. You may also access the full text of the measure on the Alameda County website at the following address: www.acgov.org/rov/.

ARGUMENT IN FAVOR OF MEASURE A

NO ARGUMENT AGAINST MEASURE A WAS SUBMITTED

We must preserve stable funding for our schools that cannot be taken by the State or Federal government. Measure A will help maintain quality schools in Hayward and help our students achieve academic excellence.

In 2012, voters of the Hayward community came together and approved Measure G in order to combat State funding cuts that would lead to the deterioration of the quality of education in our schools, and in doing so raised the necessary money denied our students by the State and Federal governments.

With Measure G, the Hayward community provided funding that could not be taken away by the State, and rescued critical education programs including math, reading, writing, and hands-on science classes and labs; enhanced library services, technology and college preparation programs; and helped attract and retain qualified teachers.

But Measure G will expire on June 30, 2017. During this time of uncertain Federal and State funding sources for Hayward schools, we can help keep our classrooms, operations, and academic programs safe with Measure A by:

- Protecting math, reading, writing, and hands-on science classes and labs;
- Restoring and maintaining music and art programs;
- Enhancing library services, technology and college preparation programs; and
- Attracting and retaining qualified teachers and schoolsite staff to ensure students receive a quality education in clean, safe, and productive classrooms.

Strong taxpayer protections are included in the measure, including:

- Independent citizen's oversight to ensure that the money is used as promised,
- No money can be spent on administrator salaries,
- Senior citizens are exempt, and
- Every penny is spent to benefit local children.

Measure A is temporary. It cannot be renewed without voter approval.

Measure A is critical to ensure stable local funding for schools in Hayward Unified School District so our students can reach their potential. Please join us in voting YES on Measure A.

s/MERCEDES FARAJ

Hayward Education Association, President

s/DEISY BATES

Association of Office and Technical Employees, President

s/DR. MARSHALL MITZMAN

Board of Trustee, Chabot College

s/KEN RAWDON

Vocal Music Teacher

s/RHONDA LEOPOLD

Parent

FULL TEXT OF MEASURE A

HAYWARD UNIFIED SCHOOL DISTRICT QUALITY LOCAL SCHOOLS AND ACADEMIC EXCELLENCE MEASURE

Quality Local Schools and Academic Excellence Measure of 2017

This Measure may be known and referred to as the "Quality Local Schools and Academic Excellence Measure of 2017."

FINDINGS:

In 2012, the voters of the Hayward Unified School District (the "District") overwhelmingly approved Measure G, the "Quality Local Schools and Academic Excellence Measure," in order to combat state funding cuts severely limiting what classroom support the District could provide to students, and stalling a deterioration of the quality of education in Hayward schools. With Measure G, the voters of the Hayward community raised the necessary funding that the State and the Federal government refused our children. With Measure G, the voters of the Hayward community protected critical education programs, by proving funding that could not be taken by the State, for:

- math, reading, writing, and hands-on science classes/labs;
- enhancing library services, technology and college preparation programs;
- providing programs for all students to meet State academic standards; and
- attracting and retaining qualified teachers.

Measure G will expire on June 30, 2017, and with its demise will go all local protections afforded to these education programs by it. Accordingly, the Board of Trustees of the District (the "Board") has determined, in its best judgment, that in order to maintain quality local schools and to achieve academic excellence, an election is advisable and has placed a local funding measure on the May 2, 2017 ballot:

To protect critical education programs, with funds that cannot be taken by the State, including:

- math, reading, writing, and hands-on science classes and labs;
- restore and maintain music and art programs;
- enhancing library services, technology and college preparation programs; and
- attracting and retaining qualified teachers.

The proposed Measure will generate revenues to be spent only within District schools and cannot be taken by the State. It requires an independent citizen's oversight committee to ensure that the money is used as promised within the Resolution, and every penny is spent to benefit local children. None of the money raised by the proposed measure can be spent on administrator salaries. Senior citizens on fixed incomes may request exemption from paying the parcel tax.

Based upon these findings, the proposed Measure provides as follows:

Section 1. Terms of the Measure.

(a) Terms and Purposes: Upon approval of two-thirds of

those voting on this Measure, the District shall be authorized to and shall levy a qualified special tax of \$88 per year per taxable parcel of real property in the District, commencing July 1, 2017, and expiring June 30, 2029.

The qualified special tax shall be known and referred to as the "Quality Local Schools and Academic Excellence Measure of 2017." Proceeds of the Measure shall be authorized to be used to provide quality education in the District by:

To protect critical education programs, with funds that cannot be taken by the State, including:

- math, reading, writing, and hands-on science classes and labs;
- restore and maintain music and art programs;
- enhancing library services, technology and college preparation programs; and
- attracting and retaining qualified teachers;

Shall Hayward Unified School District be authorized to levy \$88 per parcel annually, for 12 years, with an exemption for senior citizens, mandatory citizens' oversight and all money used for classrooms in the Hayward schools?

(b) Senior Citizen Exemption Available: An optional exemption from the special tax will be made available annually to each individual in the District who attains 65 years of age prior to July 1 of the tax year, and who owns a beneficial interest in the parcel, and who uses that parcel as his or her principal place of residence, and who applies to the District on or before July 1 of the tax year for which the exemption is sought. Any application for such exemption must be submitted to the District. Once a senior citizen has an approved qualified exemption, no further application is required to maintain the exemption for the term of the parcel tax.

Section 2. Accountability Provisions.

(a) Citizens' Oversight Committee: An independent citizens' oversight committee shall be appointed by the Board of Trustees to ensure that the proceeds from this measure are expended for the purposes described in the Measure.

(b) Government Code Section 50075.1 Compliance: Accountability Requirements: The members of the Board of Trustees, the District Superintendent, and officers of the District are hereby requested and directed, individually and collectively, to provide accountability measures pursuant to Government Code section 50075.1 that include, but are not limited to, all of the following: (i) a statement indicating the specific purposes of the qualified special tax; (ii) a requirement that the proceeds be applied only to the specific purposes identified pursuant to subsection (i); (iii) the creation of a separate special account into which the proceeds from the special taxes shall be deposited; and (iv) an annual report pursuant to Section 50075.3 of the Government Code.

(c) Government Code Section 50075.3 Compliance: Annual Report: Pursuant to Section 50075.3 of the Government Code, the Board of Trustees directs that the District Superintendent or designee file a report with the Board no later than January 1, 2018, and at least once a year thereafter

for the duration of the special tax. The annual report shall contain both of the following: (i) the amount of funds collected and expended from the special taxes, and (ii) the status of any projects or programs required or authorized to be funded as identified in Section 1(a) hereof from the proceeds of the special taxes.

(d) Specific Purposes: All of the purposes set forth in the measure shall constitute the specific purposes of the Quality Local Schools and Academic Excellence Measure of 2017, and the proceeds of that special tax shall be applied only for such purposes and shall not fund any program, project, or reduction other than those authorized above.

Section 3. Levy and Collection.

(a) Collection: The special tax shall be collected by the Alameda County Treasurer - Tax Collector (the "Tax Collector") at the same time and in the same manner and shall be subject to the same penalties as *ad valorem* property taxes collected by the Tax Collector. The collection of taxes under the Measure shall not decrease the funds available from other sources of the District in any period from the effective date hereof.

(b) Definition: "Parcel of taxable real property" as used herein shall be defined as any unit of real property in the boundaries of the Hayward Unified School District that receives a separate tax bill for *ad valorem* property taxes from the Tax Collector's Office.

(c) Exemption: All property that the Tax Collector has determined to be otherwise exempt from or on which are levied no *ad valorem* property taxes in any year shall also be exempt from the Measure in such year. The Tax Collector's determination of exemption or relief for any reason of any parcel from taxation, other than the Senior Citizen Exemption, shall be final on the taxpayer for purposes of the Quality Local Schools and Academic Excellence Measure of 2017. Taxpayers desiring to challenge the Tax Collector's determination should do so under the procedures established by the Tax Collector's Office and Section 4876.5 of the California Revenue and Taxation Code or other applicable law. Taxpayers seeking any refund of taxes paid pursuant to the Quality Local Schools and Academic Excellence Measure of 2017 shall follow the procedures applicable to tax refunds pursuant to the California Revenue and Taxation Code.

(d) List of Senior Citizen Exemption: Parcels owned and occupied by individuals who are 65 years of age or older may be exempt pursuant to the Senior Citizen Exemption provisions set forth above. The District shall annually provide a list to the Tax Collector, on or before a date established by the Tax Collector of each year, of the parcels which the District has approved for the Senior Citizen Exemption as described above.

(e) Duration: The collection of taxes pursuant to this Quality Local Schools and Academic Excellence Measure of 2017 shall be for 12 years, commencing July 1, 2017 and expiring June 30, 2029.

Section 4. Severability.

The Board hereby declares, and the voters by approving this

Measure concur, that every section, paragraph, sentence, and clause of this Measure has independent value, and the Board and the voters would have adopted each provision hereof regardless of every other provision hereof. Upon approval of this Measure by the voters, should any part be found by a court of competent jurisdiction to be invalid for any reason, all remaining parts hereof shall remain in full force and effect to the fullest extent allowed by law.



VOTER INFORMATION PAMPHLET

THE FOLLOWING PAGES CONTAIN:

Measure Information

ARGUMENTS IN SUPPORT OF OR
IN OPPOSITION TO THE PROPOSED LAWS
ARE THE OPINIONS OF THE AUTHORS.

FOR MORE INFORMATION,
VISIT OUR WEBSITE AT: ACVOTE.ORG

If you have questions about voting procedures, please call
(510) 267-8683



The Registrar of Voters Office provides
the measure information in an audio file
on Soundcloud or on a CD Format
(Mailed by Request).

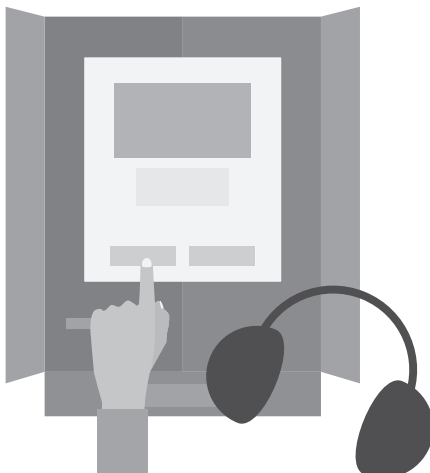
Please call (510) 272-6933 for CD
Requests.

To listen online, visit:

soundcloud.com/acvote

TTY: (510) 208-4967

ACCESSIBLE TOUCHSCREEN/ AUDIO VOTING MACHINE



An Accessible Touchscreen/Audio Voting Machine Is Provided To Assist Voters With Disabilities.

- Available at the Registrar of Voters Office
April 3 - May 2, Monday - Friday · 8:30am - 5:00pm
Election Day · 7:00am - 8:00pm
1225 Fallon St., Room G-1
Oakland, CA 94612
- Available on Election Day, May 2 · 7:00am - 8:00pm
Hayward City Hall Rotunda
777 B St.
Hayward, CA 94541

**Reminder: in order to utilize the accessible voting machine at the
Hayward location, your Vote by Mail ballot and white return
envelope must be surrendered.**

GO GREEN AND SAVE TAX DOLLARS

Opt-out of receiving your Sample Ballot and Voter Information Pamphlet by mail

Beginning January 1, 2011, State Law (AB 1717) allows voters to “go green” by choosing to opt-out of receiving their sample ballot and voter information pamphlet by mail and accessing it online instead. Choosing the online option will help reduce County costs and save tax dollars.

If you would like to opt-out of receiving your Sample Ballot and Voter Information Pamphlet by mail, simply log on to “My Voter Profile” at www.acgov.org/rov/profile.htm and change your status.

Sample Ballot and Voter Information Pamphlets are available online approximately 40 days before an election.



FOR MORE INFORMATION

Visit our website at: acvote.org
CALL: (510) 272-6973



NON-PROFIT ORG.
US POSTAGE PAID
PERMIT NO. 29
OAKLAND, CA

001



NEWS & ANNOUNCEMENTS

To receive the latest news and announcements, like us, follow us, and connect with us through your favorite social media channels!

Become an e-Subscriber and join the Alameda County Registrar of Voters e-mail subscription lists. You will receive e-mail announcements when updated information is available. <http://www.acgov.org/rov/esubscribe.htm>

NO POLLING
PLACES WILL
BE UTILIZED
FOR THIS
ELECTION

@ACVOTE

TO:

FOR VOTER ASSISTANCE CALL:
ENGLISH – (510) 272-6973

選民如需協助，請致電：
中文 – (510) 208-9665

유권자 지원이 필요하시면 아래의 전화번호로 연락하십시오.
한국어 – (510) 272-5037

मतदाता सहायता के लिए फ़ोन करे
हिंदी: (510) 272-5035

PARA ASISTENCIA PARA EL VOTANTE EN ESPAÑOL
LLAME AL (510) 272-6975

投票に関するご質問は、以下までお問い合わせ下さい。
日本語： (510) 272-5036

PARA SA TULONG PANG-BOTANTE TUMAWAG SA
TAGALOG: (510) 272-6952

សំរាប់ជំនួយការអ្នកបោះឆ្នោត សូមទូរស័ព្ទមកលេខ
ភាសាខ្មែរ: (510) 272-5038

CỬ TRI CẦN TRỢ GIÚP XIN GỌI
TIẾNG VIỆT: (510) 272-6956