



COUNTY OF ALAMEDA

**Sample Ballot and
Voter Information Pamphlet**

**CITY OF BERKELEY
DISTRICT 4**

Special Vote by Mail Election

**NO POLLING PLACES WILL BE
UTILIZED FOR THIS ELECTION**

TUESDAY, MARCH 7, 2017

001



Instructions on How to Make Your Vote Count

How does RCV Work?

To start, all first choice votes are counted. Any candidate who receives more than 50% of the first choices is declared the winner. If no candidate receives more than 50% of the first choices, a process of eliminating candidates and transferring votes begins (second choice ranking counts only when a first choice candidate is eliminated).

The Ranked-Choice Voting Ballot

Below is an example of an RCV ballot. For more information, visit our website at www.acgov.org/rov/rcv or contact the Alameda County Registrar of Voters at (510) 272-6973.

Ranked-Choice Voting

Voting made easy.

RANKED-CHOICE VOTING BALLOT		
INSTRUCTIONS TO VOTERS: USE BLACK OR BLUE BALLPOINT PEN ONLY. Complete the arrow to the right of your choice. To vote for a qualified write-in candidate, PRINT the person's name in the blank space provided and complete the arrow. You may rank up to three choices. Vote across in each race.		
1 Mark your first choice in Column 1.		
2 Mark your second choice in Column 2. This choice should be different from your first choice.		
3 Mark your third choice in Column 3. This choice should be different from your first and second choices.		
NONPARTISAN CITY FOR MAYOR 1 FIRST CHOICE <small>Vote for One</small>	NONPARTISAN CITY FOR MAYOR 2 SECOND CHOICE <small>Vote for One</small>	NONPARTISAN CITY FOR MAYOR 3 THIRD CHOICE <small>Vote for One</small>
ELEANOR ROOSEVELT ←	ELEANOR ROOSEVELT ←	ELEANOR ROOSEVELT ←
BOOKER T. WASHINGTON ←	BOOKER T. WASHINGTON ←	BOOKER T. WASHINGTON ←
DIEGO RIVERA ←	DIEGO RIVERA ←	DIEGO RIVERA ←
ARTHUR MILLER ←	ARTHUR MILLER ←	ARTHUR MILLER ←
SHIRLEY HORN ←	SHIRLEY HORN ←	SHIRLEY HORN ←
BRUCE LEE ←	BRUCE LEE ←	BRUCE LEE ←
←	←	←

Keep in Mind:

Your *second choice* will be counted only if your *first choice* candidate has been eliminated. Your *third choice* will be counted only if both your *first choice* and *second choice* candidates have been eliminated.

If you selected the same candidate in more than one column, your vote for that candidate will count **ONLY ONCE**.

To Vote:

Connect the arrow as shown here.



Write-In Candidates:

If you wish to vote for a qualified write-in candidate for any of your three choices, write the person's name on the blank line provided and complete the arrow pointing to your choice.

First Column
Mark your **first choice** candidate by completing the arrow pointing to your choice.

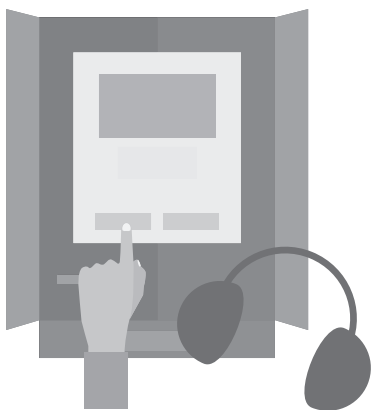
Second Column
To indicate a **second choice**, select a *different* candidate in the second column by completing the arrow pointing to your choice.

Third Column
To indicate a **third choice**, select a *different* candidate in the third column by completing the arrow pointing to your choice.

ATTENTION

CITY OF BERKELEY, CITY COUNCIL, DISTRICT 4 VOTERS

- This is a special Vote By Mail election; ballots will be automatically mailed to all registered voters who reside in the City of Berkeley, City Council, District 4.
- **NO** polling places will be utilized for this election.
- **NO** postage necessary to return the ballot.
- If you are unable to enter the Courthouse building because of age or physical disability, you will be allowed to vote either in your vehicle or near the Courthouse building. To make an appointment or arrangements, please contact our office at (510) 272-6933.
- Disability Rights California will operate an Election Day Hotline: 1-888-569-7955 from 7:00am - 8:00pm



An Accessible Touchscreen/Audio Voting Machine Is Provided To Assist Voters With Visual, Auditory Or Motor Skill Limitations.

- Available at the Registrar of Voters Office from February 6 - March 7, Monday - Friday · 8:30am - 5:00pm
Election Day · 7:00am - 8:00pm
1225 Fallon St., Room G-1
Oakland, CA 94612
- Available on Election Day, March 7 · 7:00am - 8:00pm
Civic Center Building
2180 Milvia Street, 1st Floor, Cypress Room
Berkeley, CA 94704

Reminder: in order to utilize the accessible voting machine at the Berkeley location, your Vote by Mail ballot and pink return envelope must be surrendered.

***IMPORTANT DATES**

- **FEBRUARY 6, 2017** - First day of early voting at the Registrar of Voters office
- **FEBRUARY 6, 2017** - First day to mail Vote By Mail ballots to Voters
- **FEBRUARY 20, 2017** - Last day to register to vote for this election
- Ballots must be in the Alameda County Registrar of Voters office or an official ballot drop box **no later than 8pm on March 7, 2017.**
- Mail your ballot by **March 2nd** to ensure it is received in time to be processed. Your ballot must be postmarked on or before Election Day and received by the Registrar of Voters office no later than **March 10th.**

MARCH						
S	M	T	W	T	F	S
			1	2	3	4
5	6	7	8	9	10	11
12	13	14	15	16	17	18
19	20	21	22	23	24	25
26	27	28	29	30	31	



! Don't forget to sign the back of your Vote By Mail return envelope

*If date falls on a holiday, deadline will be on the following business day.

OFFICIAL BALLOT / BOLETA OFICIAL

CITY OF BERKELEY, DISTRICT 4, SPECIAL VOTE BY MAIL ELECTION
CIUDAD DE BERKELEY, DISTRITO 4, ELECCIÓN ESPECIAL DE VOTACIÓN POR CORREO
ALAMEDA COUNTY / CONDADO DE ALAMEDA
MARCH 7, 2017 / 7 DE MARZO DE 2017

RANKED-CHOICE VOTING BALLOT BOLETA DE VOTACIÓN POR ORDEN DE PREFERENCIA

INSTRUCTIONS TO VOTERS: USE BLACK OR BLUE BALLPOINT PEN ONLY. Complete the arrow to the right of your choice. To vote for a qualified write-in candidate, PRINT the person's name in the blank space provided and complete the arrow. You may rank up to three choices. Vote across in each race.

INSTRUCCIONES PARA LOS VOTANTES: USE UN BOLÍGRAFO CON TINTA NEGRA O AZUL SOLAMENTE. Complete la flecha a la derecha de su selección. Para votar por un candidato calificado para inserción de su nombre por escrito, escriba el nombre de esa persona EN LETRA DE MOLDE en el espacio en blanco proporcionado y complete la flecha. Usted puede clasificar hasta tres opciones. Vote a través de cada contienda.

- 1** Mark your first choice in Column 1.
Marque su primera preferencia en la Columna 1.
- 2** Mark your second choice in Column 2. This choice should be different from your first choice.
Marque su segunda preferencia en la Columna 2. Esta selección debe ser diferente de su primera selección.
- 3** Mark your third choice in Column 3. This choice should be different from your first and second choices.
Marque su tercera preferencia en la Columna 3. Esta selección debe ser diferente de sus primeras y segundas selecciones.

Sample Ballot

NONPARTISAN OFFICES CARGOS NO PARTIDARIOS
CITY OF BERKELEY CIUDAD DE BERKELEY
FOR MEMBER OF CITY COUNCIL, DISTRICT 4, SHORT TERM PARA MIEMBRO DEL CONCEJO MUNICIPAL, DISTRITO 4, CORTO PLAZO
1 FIRST CHOICE PRIMERA SELECCIÓN Vote for One / Vote por Uno
KATE HARRISON International Justice Advisor Asesor en Asuntos de Justicia Internacional
BEN GOULD Environmental Analyst/Researcher Analista Ambiental/Investigador

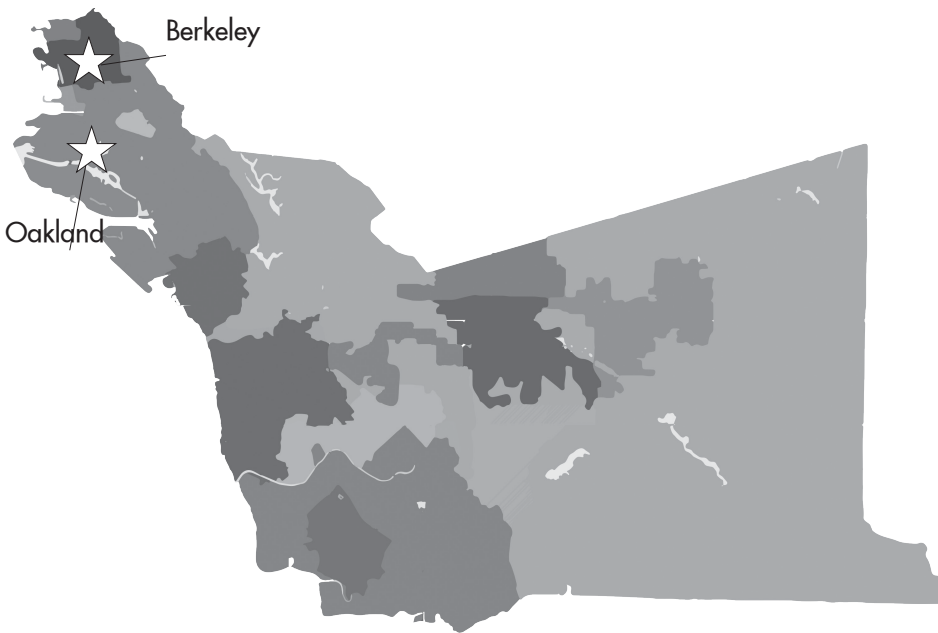
NONPARTISAN OFFICES CARGOS NO PARTIDARIOS
CITY OF BERKELEY CIUDAD DE BERKELEY
FOR MEMBER OF CITY COUNCIL, DISTRICT 4, SHORT TERM PARA MIEMBRO DEL CONCEJO MUNICIPAL, DISTRITO 4, CORTO PLAZO
2 SECOND CHOICE SEGUNDA SELECCIÓN Vote for One / Vote por Uno
KATE HARRISON International Justice Advisor Asesor en Asuntos de Justicia Internacional
BEN GOULD Environmental Analyst/Researcher Analista Ambiental/Investigador

NONPARTISAN OFFICES CARGOS NO PARTIDARIOS
CITY OF BERKELEY CIUDAD DE BERKELEY
FOR MEMBER OF CITY COUNCIL, DISTRICT 4, SHORT TERM PARA MIEMBRO DEL CONCEJO MUNICIPAL, DISTRITO 4, CORTO PLAZO
3 THIRD CHOICE TERCERA SELECCIÓN Vote for One / Vote por Uno
KATE HARRISON International Justice Advisor Asesor en Asuntos de Justicia Internacional
BEN GOULD Environmental Analyst/Researcher Analista Ambiental/Investigador



24-HOUR DROP BOXES

Drop your ballot off early, before Election Day at any 24-hour drop box, located in Berkeley and Oakland.



Our 24-hour drop boxes will be open until 8:00pm on Election Day.

FOR LOCATION INFORMATION,
VISIT OUR WEBSITE AT: WWW.ACIVATE.ORG/DROPBOX



MAKE YOUR VOTE COUNT

Remember to sign the back of your return envelope.



VOTER INFORMATION PAMPHLET

THE FOLLOWING PAGES CONTAIN:

Candidates' Statements

Not all candidates submit a statement of qualifications. For a complete list of candidates on the ballot, view your sample ballot, which is included within this pamphlet.

Each candidate's statement of qualifications, if any, is volunteered by the candidate and is printed at the expense of the candidate, unless otherwise determined by the governing body. Statements have been printed as submitted by the candidates.



www.soundcloud.com/acvote

The Registrar of Voters Office provides the candidates' statements in an audio file on Soundcloud or

on a CD Format (Mailed by Request).

Please call (510) 272-6933 for CD Requests.

Hearing Impaired:

Please call
(510) 208-4967

**FOR MORE INFORMATION,
VISIT OUR WEBSITE AT: WWW.ACVOKE.ORG**

**If you have questions about voting procedures, please call
(510) 267-8683**

Candidate for MEMBER, CITY COUNCIL, DISTRICT 4, SHORT TERM

I, **KATE HARRISON**, hereby declare that I am a candidate for an elective office in the City of Berkeley, and make the following statement:



1. That my name is Kate Harrison
 2. The office for which I am a candidate is Berkeley City Council, District 4
 3. That my residence is 2043 Lincoln Street, Berkeley, CA 94709
 4. The place of my birth is Los Angeles, CA
 5. My present occupation is International Justice Advisor
 6. I have held the following public offices: Commissioner, Housing Advisory Commission; Commissioner, Parks, Recreation and Waterfront Commission; Member, Zoning Adjustment Board; Vice Chair, Downtown Berkeley Streets and Open Space Improvement Plan Joint Subcommittee; Member, Waterfront Commission; Chair, Parks Sustainability Subcommittee of the Parks and Waterfront Commission
 7. Record of community service: Berkeley Progressive Alliance; Wellstone Club; Berkeley Tenants Union; East Bay Citizens for Action; Sierra Club: ACLU; Berkeley Food and Housing; SF Mime Troupe; ASUC Senate
 8. I am a taxpayer in the City of Berkeley.
9. Berkeley deserves bold, progressive leadership - the kind I've provided the community as a government executive, commissioner, and small business owner. I have the experience to hit the ground running as an effective representative. For over 25 years, I have managed state/municipal budgets, analyzed public policy and proposed ways to make government more efficient. My consulting practice improves access to justice for those in most need. I helped pass Berkeley's Rent Control Ordinance, led last year's successful campaign to provide \$4 million/year for affordable housing, and secured increased community benefits from Downtown developers. On the Housing Advisory, Streets and Open Space, and Parks Commissions and the Berkeley Food and Housing Project Board, I've effectively advocated for a greener, more livable, and transit-oriented Downtown. My priorities for District 4 include: creating affordable infill housing; addressing homelessness; protecting tenants; revitalizing our Downtown; making the city sustainable, water-wise and carbon-neutral; and saving Alta Bates Hospital. Please join endorsers Assembly member Tony Thurmond, current and former Berkeley Mayors Jesse Arreguin and Gus Newport, Peralta Trustees Nicky Gonzalez Yuen and Karen Weinstein, members of the Rent Board, and a broad coalition of community leaders in supporting me for a Berkeley that works for everyone. www.electkateharrison.com.
10. I refer to the following residents of the City of Berkeley:
- Jesse Arreguin, Mayor of Berkeley; former District 4 Councilmember
 - Ben Bartlett, Berkeley City Councilmember, District 3
 - Sophie Hahn, Berkeley City Councilmember, District 5
 - Sheila Jordan, Alameda County Superintendent of Schools emerita
 - Wendy Bloom, Registered Nurse, Member of California Nurses Association
 - John T Selawsky, Chairperson, Berkeley Rent Board
 - Igor Tregub, Chairperson, Berkeley Housing Advisory Commission and Zoning Adjustments Board
 - Leah Simon-Weisberg, Legal Director, Tenants Together; Malcolm X PTA Executive Committee
 - Mansour Id-Deen, President – Berkeley NAACP
 - Rob Wrenn, Former Chair, Berkeley Planning Commission; Co-founder Berkeley Progressive Alliance
 - James McGrath, Parks and Waterfront Commissioner
 - Nicky González Yuen, Trustee, Peralta Community College Board of Trustees
 - Nancy Holland, Former Legislative Assistant to Councilmember Dona Spring
 - Colin Arnold, Director at Large, Berkeley Firefighters Association
 - Anna De Leon, Civil Rights Lawyer; Former Berkeley School Board President
 - Donald Goldmacher, Organizer, Save Shattuck Cinema
 - Dyana Delfin-Polk, Member, Community Environmental Advisory Commission
 - Bonita R. Hughes, Berkeley Arts' Festival Director
 - Matthew Lewis, Vice President of the Berkeley Progressive Student Association
 - Maritessa Bravo Ares, Chair, City of Berkeley Commission on the Status of Women

s/KATE HARRISON

Candidate for MEMBER, CITY COUNCIL, DISTRICT 4, SHORT TERM

I, **BEN GOULD**, hereby declare that I am a candidate for an elective office in the City of Berkeley, and make the following statement:



1. That my name is Ben Gould
2. The office for which I am a candidate is City Council, District 4
3. That my residence is 2110 Kittredge St. #212 Berkeley, CA
4. The place of my birth is Berkeley, CA
5. My present occupation is Environmental policy analyst, web developer, graduate student researcher
6. I have held the following public offices: Chair, Community Environmental Advisory Commission; Member, Zoning Adjustments Board; Member, Housing Advisory Commission; Member, Police Review Commission
7. Record of community service: Member, Chancellor's Community Partnership Fund Advisory Board; Chair, The Green Initiative Fund; Delegate, UC Berkeley Graduate Assembly; President, Engineers for a Sustainable World at Berkeley
8. I am a taxpayer in the City of Berkeley.

9. I love Berkeley and will fight to protect our city's values and diversity. I was born and raised in Berkeley and graduated from Berkeley High, and I have a history of achieving progressive victories here in Berkeley. On the UC Berkeley Graduate Assembly, I fought for – and won – access to LGBT-inclusive health care for all students. As Chair of the Community Environmental Advisory Commission, I fought for the health of our children and our soil against lead poisoning, and I developed green building and indoor air quality standards. With my experience as an environmental engineer and a policy analyst, I bring a rational, non-ideological approach to addressing Berkeley's challenges. We need a City Councilmember who brings a fresh, balanced perspective; and as your representative, I will deliver real solutions rooted in progressive principles. I will push for long-term, regional approaches to homelessness. I will champion housing at all income levels to preserve Berkeley's cultural and economic diversity. And I will continue the work of revitalizing Downtown, expanding transit and bicycle infrastructure, ensuring public safety, and leading efforts to prevent and mitigate climate change. Berkeley is my home, and I will never stop fighting to build a better future for our city and for generations to come. www.bengould.org

10. I refer to the following residents of the City of Berkeley:

Lori Droste, Berkeley City Councilmember
Susan Wengraf, Berkeley City Councilmember
Darryl G. Moore, Former Chair, National Black Justice Coalition
Gordon Wozniak, Former Berkeley City Councilmember
André Luu, ASUC External Affairs Vice President
Jonathan Morris, External Affairs Vice President of the Graduate Assembly
Dax viviD, GA Campus Affairs Vice President (for identification purposes only)
Dorothy Walker, Community Activist
Karen Chapple, Professor, City and Regional Planning, UC-Berkeley and Berkeley Planning Commission Member
Stephanie Allan, Co-Chair, Citizens Bond Oversight Committee
Julie Sinai, Chairperson, Children, Youth & Recreation Commission, Former BUSD School Board Director
George Perezvelez, Former Chair Police Review Commission
Alfred Twu, Zero Waste Commission Chair
Michael H. Goldhaber, Vice-Chair Community Environmental Advisory Commission
Jenny Wenk, Personnel Board, Vice-Chair
Bob Dixon, Member and former Chair, Personnel Board
James M Reagan, Former Commissioner Human Welfare Commission
Victoria Q. Legg, Disaster Fire Safety Commissioner
Jill Martinucci, Housing Advisory Commissioner
Kelly Jiang, Energy Commissioner

s/BEN GOULD



STAY CONNECTED

- View live election results
- Get up-to-date event information
- View your voter registration information and more

@acvote



acvote.org



facebook



instagram



twitter

acvote.org

GO GREEN AND SAVE TAX DOLLARS

Opt-out of receiving your Sample Ballot and Voter Information Pamphlet by mail

Beginning January 1, 2011, State Law (AB 1717) allows voters to “go green” by choosing to opt-out of receiving their sample ballot and voter information pamphlet by mail and accessing it online instead. Choosing the online option will help reduce County costs and save tax dollars.

If you would like to opt-out of receiving your Sample Ballot and Voter Information Pamphlet by mail, simply log on to “My Voter Profile” at www.acgov.org/rov/profile.htm and change your status.

Sample Ballot and Voter Information Pamphlets are available online approximately 40 days before an election.



FOR MORE INFORMATION

**Visit our website at: acvote.org
CALL: (510) 272-6973**



NON-PROFIT ORG.
US POSTAGE PAID
PERMIT NO. 29
OAKLAND, CA

001



NEWS & ANNOUNCEMENTS

To receive the latest news and announcements, like us, follow us, and connect with us through your favorite social media channels!

Become an e-Subscriber and join the Alameda County Registrar of Voters e-mail subscription lists. You will receive e-mail announcements when updated information is available. <http://www.acgov.org/rov/esubscribe.htm>

NO POLLING
PLACES WILL
BE UTILIZED
FOR THIS
ELECTION

@ACVOTE

TO:

FOR VOTER ASSISTANCE CALL:
ENGLISH – (510) 272-6973

選民如需協助，請致電：
中文 – (510) 208-9665

유권자 지원이 필요하시면 아래의 전화번호로 연락하십시오.
한국어 – (510) 272-5037

मतदाता सहायता के लिए फ़ोन करे
हिंदी: (510) 272-5035

PARA ASISTENCIA PARA EL VOTANTE EN ESPAÑOL
LLAME AL (510) 272-6975

投票に関するご質問は、以下までお問い合わせ下さい。
日本語： (510) 272-5036

PARA SA TULONG PANG-BOTANTE TUMAWAG SA
TAGALOG: (510) 272-6952

សំរាប់ជំនួយការអ្នកបោះឆ្នោត សូមទូរស័ព្ទមកលេខ
ភាសាខ្មែរ: (510) 272-5038

CỬ TRI CẦN TRỢ GIÚP XIN GỌI
TIẾNG VIỆT: (510) 272-6956